

# Inductive Reasoning

## Question & Answers



**PRACTICE**  
APTITUDE TESTS

## What are inductive reasoning tests?

Inductive reasoning tests can also be referred to as diagrammatic and abstract reasoning tests. The most popular forms of inductive reasoning tests are matrices, horizontal shape sequences, A/B sets and odd-one-out sets.

## What do inductive reasoning tests measure?

These types of tests provide employers with an insight into the way in which you think, and how you approach new rules and situations. Unlike deductive reasoning, inductive reasoning allows for the possibility that the conclusion is false, even if all of the premises are true.

**“Remember, with inductive reasoning you will be faced with shape sequences and matrices. With deductive reasoning you will be faced with verbal passages and numerical data.”**

With inductive reasoning, there is a degree of certainty but it is not absolute.

## Instructions for use

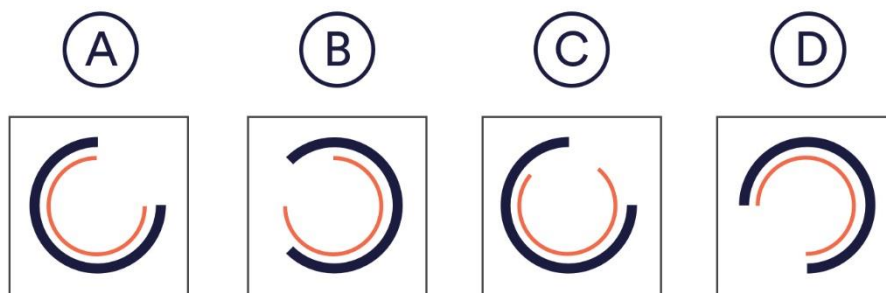
We've provided 5 inductive reasoning questions and answers for you to work through. Try and do each one under timed conditions without looking at the answers. Once you've completed each one, look at the answer to assess your performance and see how you can improve moving forwards.

All questions are multiple choice and there is only one correct answer. Try to take the test in an environment where you will not be disturbed.

If you'd like more inductive reasoning test practice, you can access our huge [inductive reasoning test](#) vault online. They're all written by industry experts and are designed to replicate the real tests.

## Question 1

Complete the sequence.



A) ☐

B) ☐

C) ☐

D) ☐

## Solution

**Answer = B.** The outer circle is turning in an anti-clockwise direction and the inner circle is rotating 90 degrees in a clockwise direction.

## Question 2

Which of the suggested shapes shares a feature with the given shapes?

**W E Y**

(A)

**F**

(B)

**O**

(C)

**T**

(D)

**H**

A) ☐

B) ☐

C) ☐

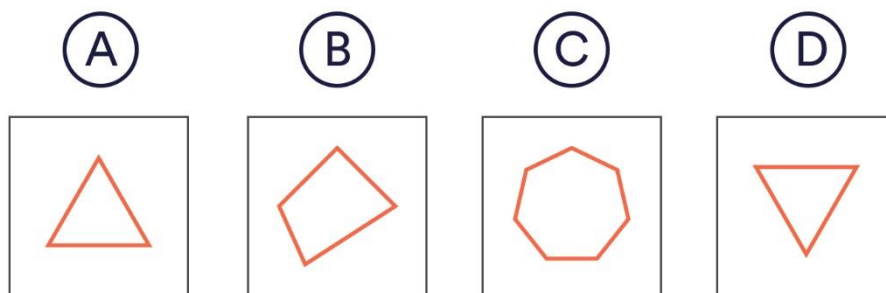
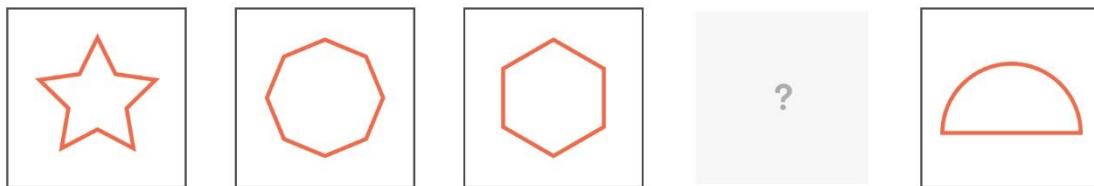
D) ☐

## Solution

**Answer = C.** All of the given shapes have 1 line of symmetry, meaning C is the only shape that could be correct. A has none, B has multiple and C has 2.

### Question 3

Complete the sequence.



A) ☐

B) ☐

C) ☐

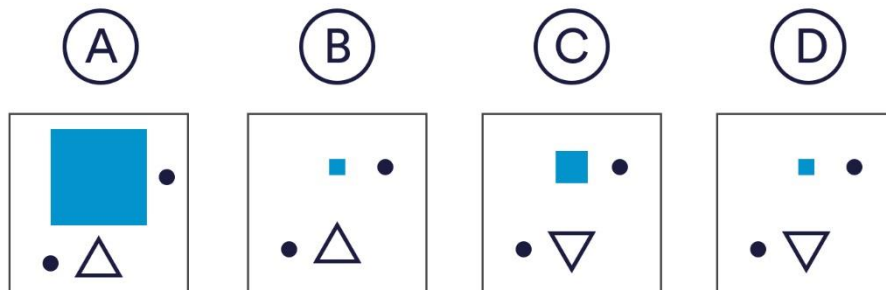
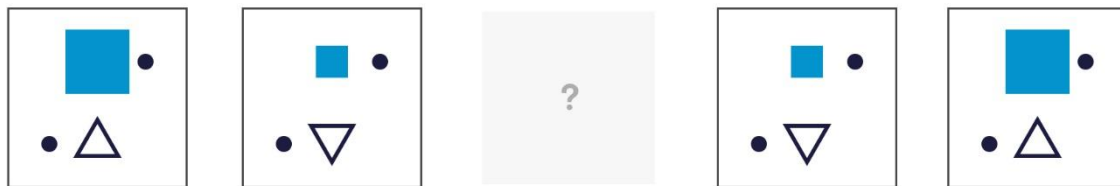
D) ☐

### Solution

**Answer = B.** The sides of each shape are decreasing by 2 as you move along each image in the sequence.

## Question 4

Identify the patterns and work out which of the following would complete the sequence.



A) ☐

B) ☐

C) ☐

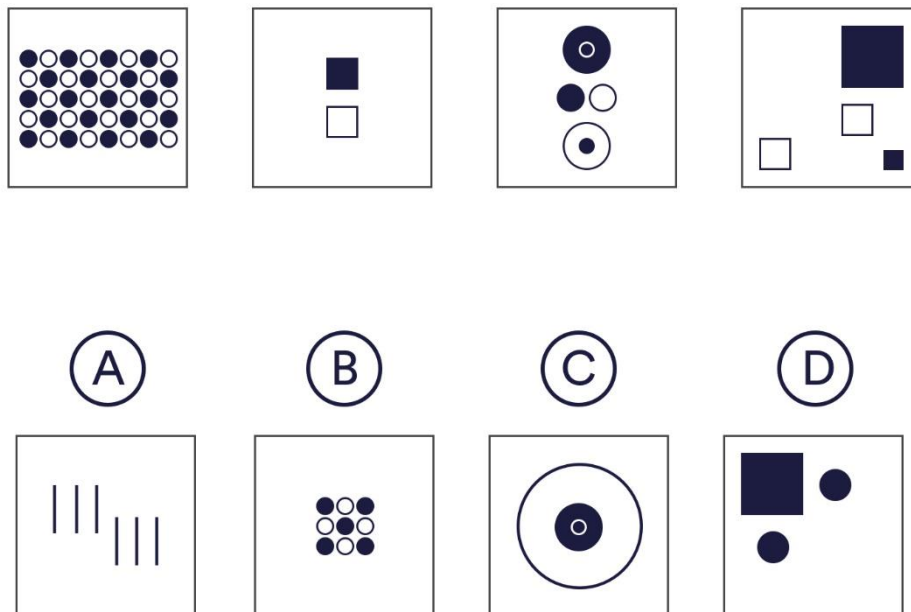
D) ☐

## Solution

**Answer = B.** The first pattern that you can identify is the pentagon in the bottom corner is alternately flipping vertically, ruling out C and D. The only difference between A and B is the size of the square, in order to maintain a sequential pattern B must be correct, the square grows in size then shrinks as it progresses along the sequence.

## Question 5

Which of the suggested images would belongs with the given sequence?



A) ☐

B) ☐

C) ☐

D) ☐

## Solution

**Answer = A.** The pictures are seemingly random, however they all contain an even number of shapes; 40 dots, 2 squares, 6 circles, 4 squares. Therefore, the answer must be A as it is the only one with an even number of shapes, 6 lines.

## Practice 1000's aptitude tests online

Join 9+ million people and access our complete Aptitude Testing catalogue online.



### Numerical Reasoning

45 tests | 900 questions



### Verbal Reasoning

45 tests | 675 questions



### Diagrammatic Reasoning

30 tests | 300 questions



### Abstract Reasoning

1 tests | 10 questions



### Inductive Reasoning

1 tests | 10 questions



### Mechanical Reasoning

1 tests | 10 questions



### Financial Reasoning

1 tests | 10 questions



### Spatial Reasoning

1 tests | 10 questions



### Logical Reasoning

1 tests | 10 questions



Prepare yourself for leading employers



